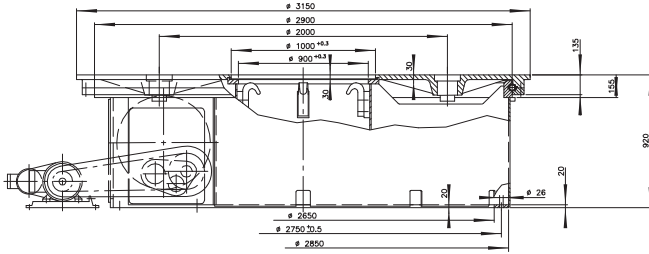
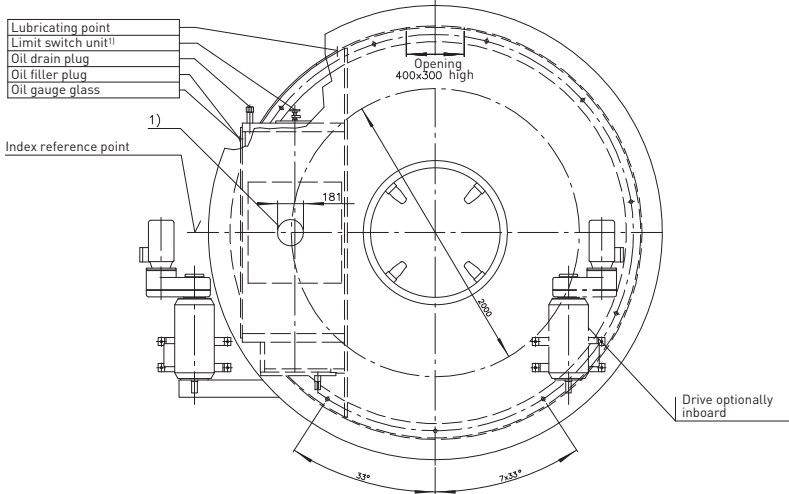


ED3150/A3753

Precision index drives for rotary motions



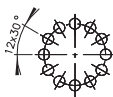
- Lubricating point
- Limit switch unit¹⁾
- Oil drain plug
- Oil filler plug
- Oil gauge glass



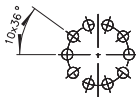
On diameter 2980 pin holes
 $\varnothing 24^{H7}/x40$ deep and tapped holes M24x40
 deep have been drilled into the top plate
 for securing the customer's tool plate.

²⁾ Location of the cam followers at the index reference point
 (Free areas must be provided accordingly in the tool plate)

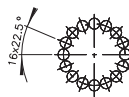
1/4/6/12 Indexing steps
 12 cam followers



5/10 Indexing steps
 10 cam followers



8/16 Indexing steps
 16 cam followers



¹⁾ For the dimensions of limit switch
 units, accessories or special design,
 please ask for a separate drawing.

Technical data

Static bearing capacity of table plate bearing
 (theoretic factors of the bearing manufacturer)

$C_{0A} = 5065000 \text{ N}$

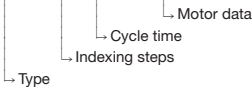
$C_{0R} = 2383000 \text{ N}$

$C_{0M} = 3456000 \text{ Nm}$

Permissible resulting tangential moment, due to process related
 forces incurred while the table plate is at standstill: $M_t = 55000 \text{ Nm}$

Order example:

ED3150 3 8,2 400 V - 50 Hz



Indexing steps

Standard indexing steps: 2,3,4,5,6,8,10,12,16
 further indexing steps on request

Tool plate

Mounting of tool plate see drwg.

Accuracy

order: ± 21 angular seconds

Total weight

High-precision performance upon request

Motor

approx. 5500 kg (depending on size of motor)

Remark

C-flange motor to requirements

This type range permits the construction of special
 models with different technical data. In order
 to prepare a detailed offer, we would need exact
 technical information.